



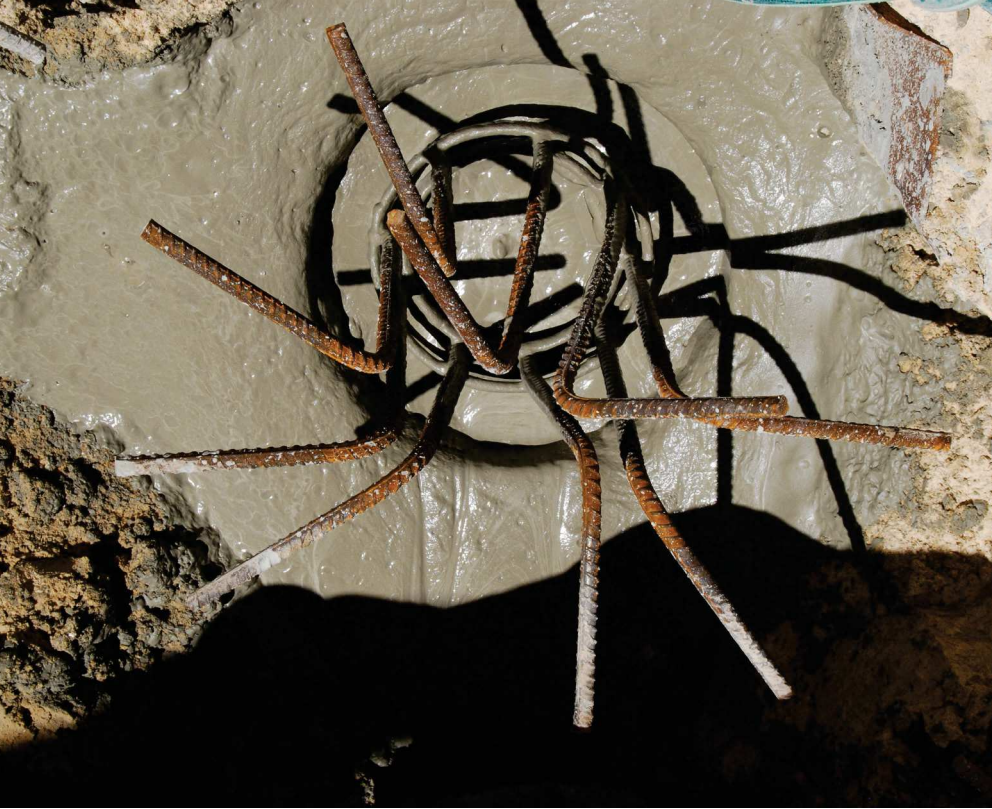
**PILING
ANCHORING
DEWATERING**

1300 949 607

www.ausheet.com.au

ASP Piling is one of the most experienced and comprehensive providers of piling and anchoring solutions to the construction industry in Australia. Our sister company Australian Dewatering Systems is the leading dewatering service provider with Australia's largest fleet of water treatment settlement tanks.

Bored Piers



'Bored pier' is the term given to a non-displacement pile formed in cohesive ground conditions where an auger and soil column may be extracted from the drilled hole without collapse, allowing reinforcement to be lowered into the hole and concrete to be pumped in to complete the pile. Where granular soils or groundwater present more challenging conditions, a steel casing may be used to support the hole and allow auger extraction without collapse. Bored piers are typically used as foundation piles to limit settlement of the structures they support, however the technique may also be applied to the construction of soldier piles for retaining walls.

The bored pier installation process involves minimal noise and vibration in comparison to driven pile techniques. ASP Piling has the specialist equipment and expertise to install bored piers across a wide range of site-specific soil, rock and groundwater conditions.

Methodology

ASP utilises an extensive range of purpose-built drill tools including sand, soil and rock augers, clean-out buckets, core barrels, and down-hole hammer drills to remove soil and rock.

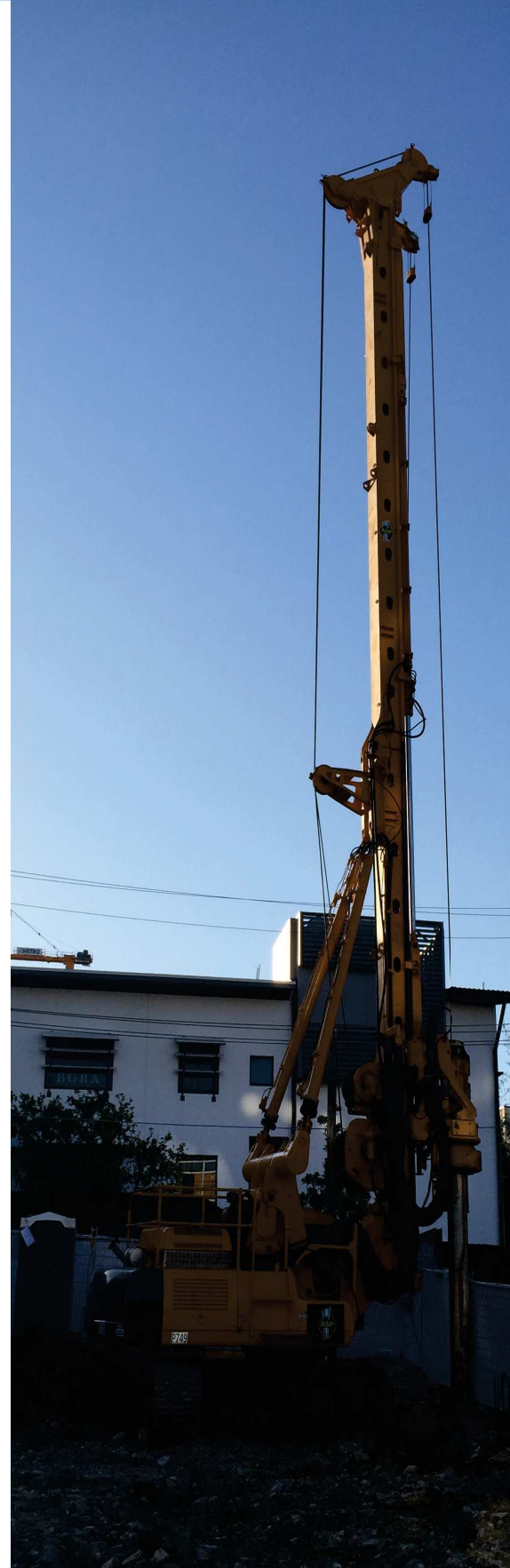
ASP can offer bored piers drilled to depths of up to 16 metres in a range of diameters from 300mm to 750mm depending on the geotechnical conditions and project requirements.

Advantages

Efficient & Cost Effective: In suitable ground conditions, bored pier installation can be fast and economical.

Quiet: ASP's bored piers are installed with very little vibration and with much lower noise levels than driven piles.

Flexible: Bored piers can be used in a wide variety of applications.



ASP Bored Piers



Above: Bored piers can be constructed using steel as well as grout.

Right: Bored Piers used in conjunction with soldier piles.

Below: Installation at a school site.



PILING • ANCHORING • DEWATERING
1300 949 607 www.ausheet.com.au



ASP Piling Pty Ltd PO Box 6247, Yatala, Qld 4207